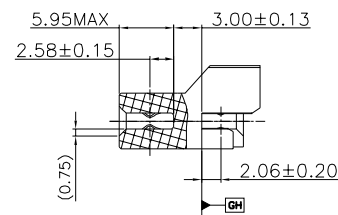
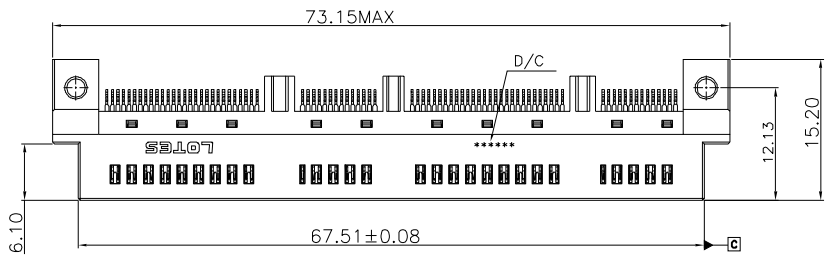
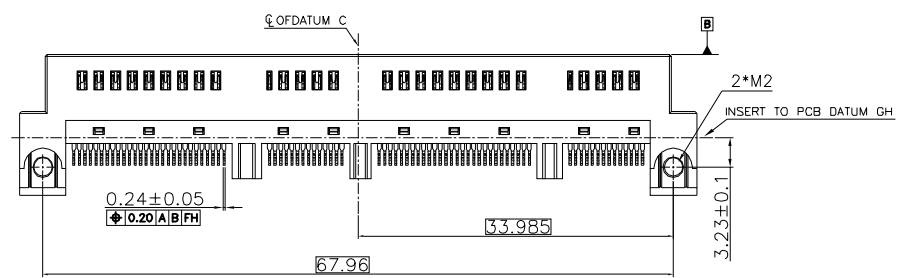
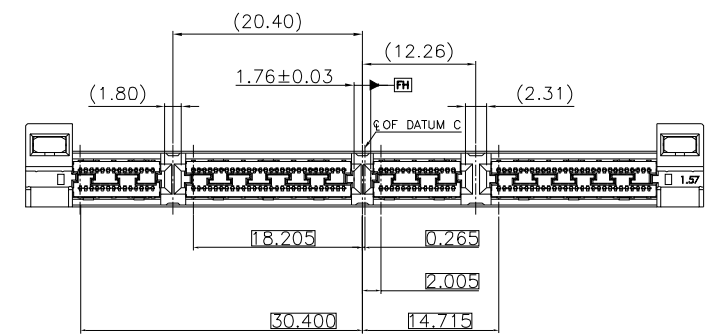
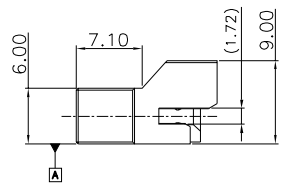
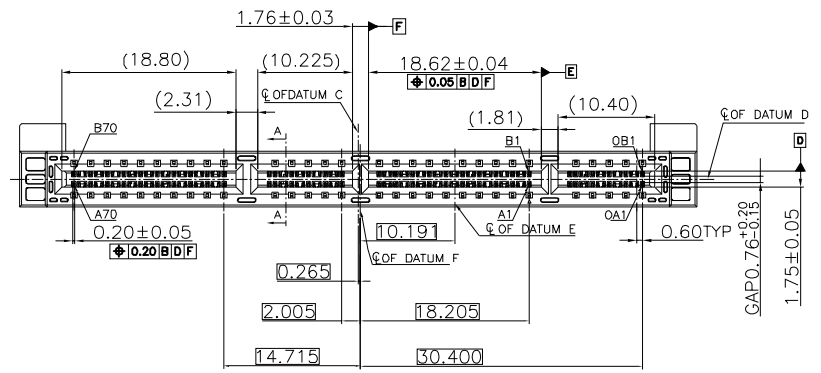


REV.	ECN NO./DESCRIPTION	DATE
B	R220023	06/21'22
C	R220023	08/24'22
D	R220023	03/16'23



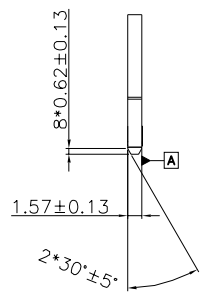
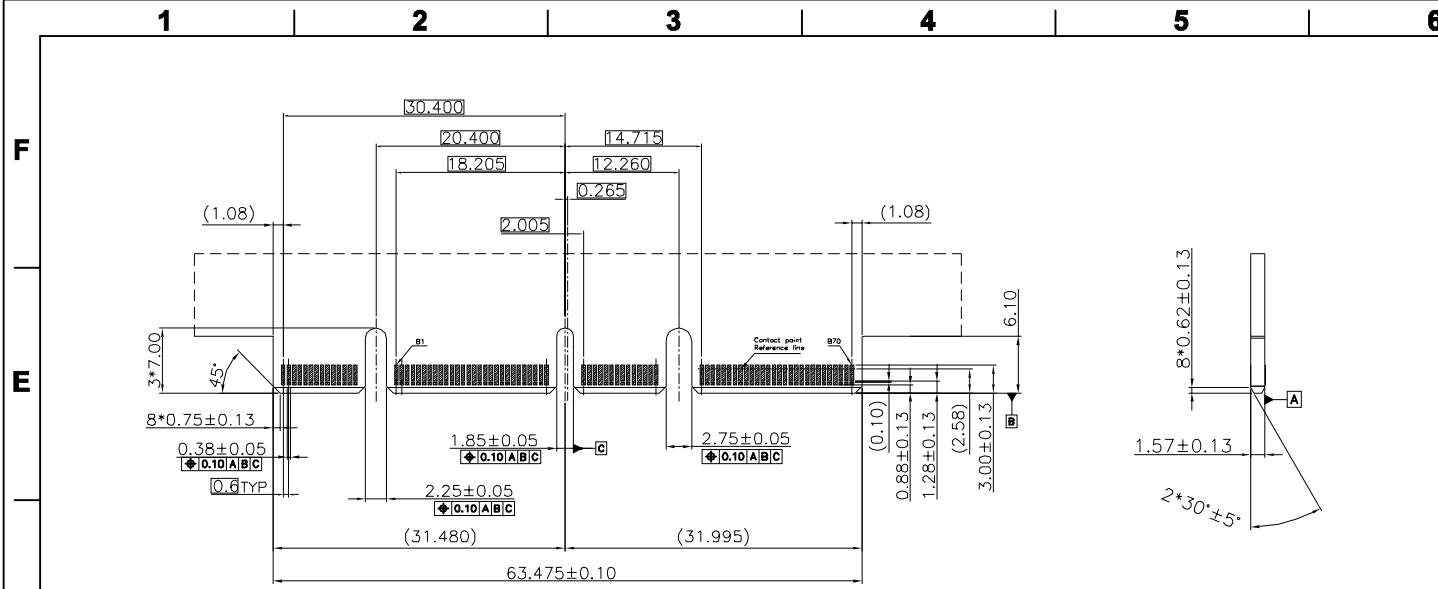
SECTION: A-A
SCALE: 1:1

NOTES:
 1.MATERIAL
 HOUSING&MOLDING HOUSING: LCP+40%GF /BLACK, UL94V-0
 CONTACT: C7035/XE (T:0.18)
 NUT: COPPER/HBI59(T:1.70)
 2.PLATING
 CONTACT: 50u" NICKEL UNDERPLATED
 80u" MIN MATTE TIN PLATED ON SOLDER AREA.
 Au(SEE TABLE) PLATING ON CONTACT AREA.
 NUT: 30u" NICKEL UNDERPLATED
 3.MECHANICAL PERFORMANCE:
 MATING FORCE:1.1N/pair pin max
 UNMATING FORCE:0.1N / pair pin min

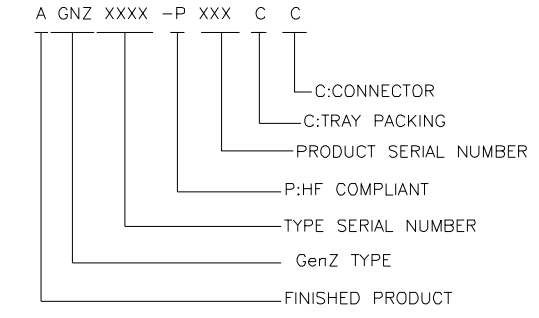


GENERAL TOLERANCES UNLESS SPECIFIED		PART NO. AGNZA131-P001CC	LOTES		
X± 0.35	X°± 3°				
.XX± 0.25	.X°± 2°	APPROVED BY DeFang_Hu_03/16'23	TITLE GenZ 4C+ STRADDLE MOUNT_CONN. (1.57mm)		
.XXX±0.15	.XX°± 1°	CHECKED BY WenWei_Lin_03/16'23	DWG NO. GAP-AGNZA131		
CUSTOMER DRAWING		DRAWN BY XiaoLin_Li_03/16'23	SHEET 1 / 3	SCALE 1:1	REV D
SIZE A4	UNITS MM [INCH]	DRAWN BY XiaoLin_Li_03/16'23			

REV.	ECN NO./DESCRIPTION	DATE
B	R220023	06/21'22
C	R220023	08/24'22
D	R220023	03/16'23



- 4.ELECTRICAL PERFORMANCE:
CURRENT RATING:1.1A
VOLTAGE RATING:29VAC
INSULATION RESISTANCE: 1000MΩ MIN.
- 5.ENVIRONMENTAL PERFORMANCE:
TEMPERATURE RATING: -45°C~+85°C.
- 6.THE PEAK TEMPERATURE ON THE BOARD SHALL MAINTAIN 10 SECONDS AT 260°C
- 7.RoHS/RoHS2.0 OR HF COMPLIANT
- 8.PRODUCT NUMBER NOTE:



- 9.DATE CODE: * * * * *
- LINE
- DAY
- WEEK
- YEAR

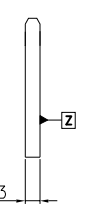
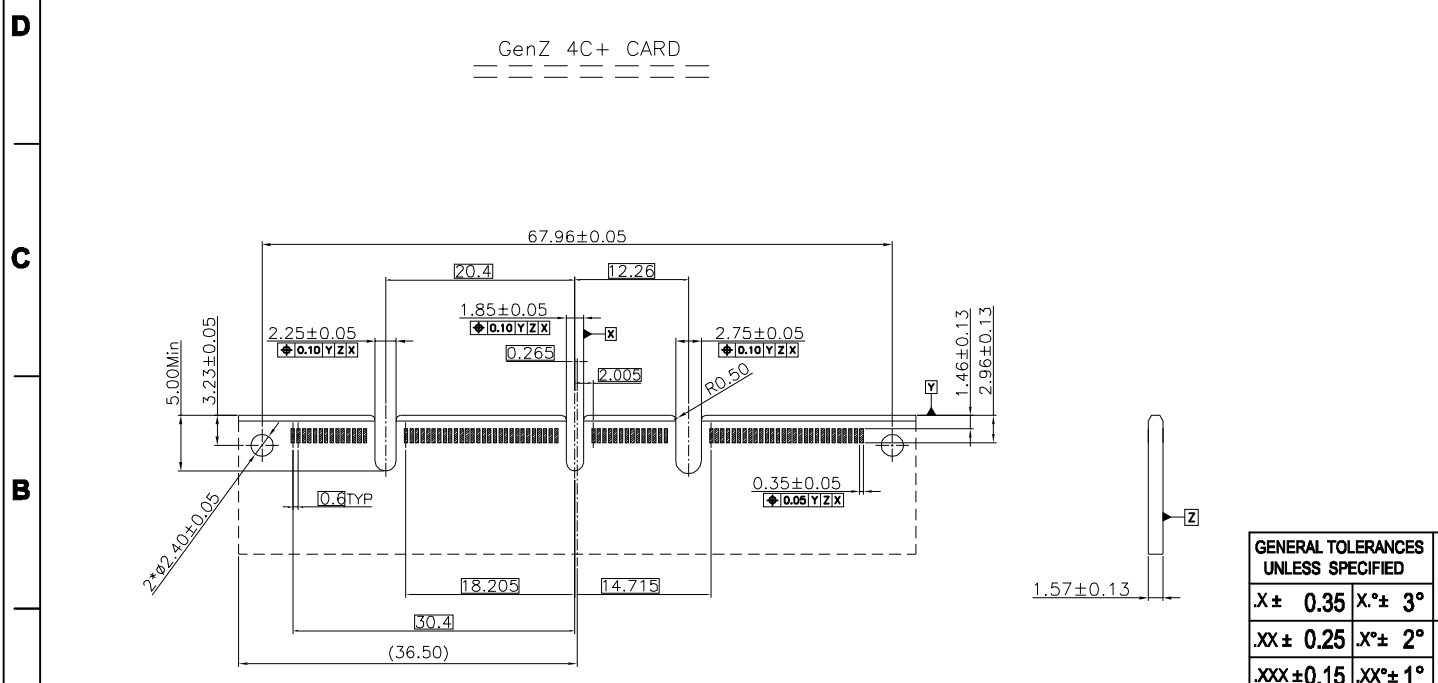
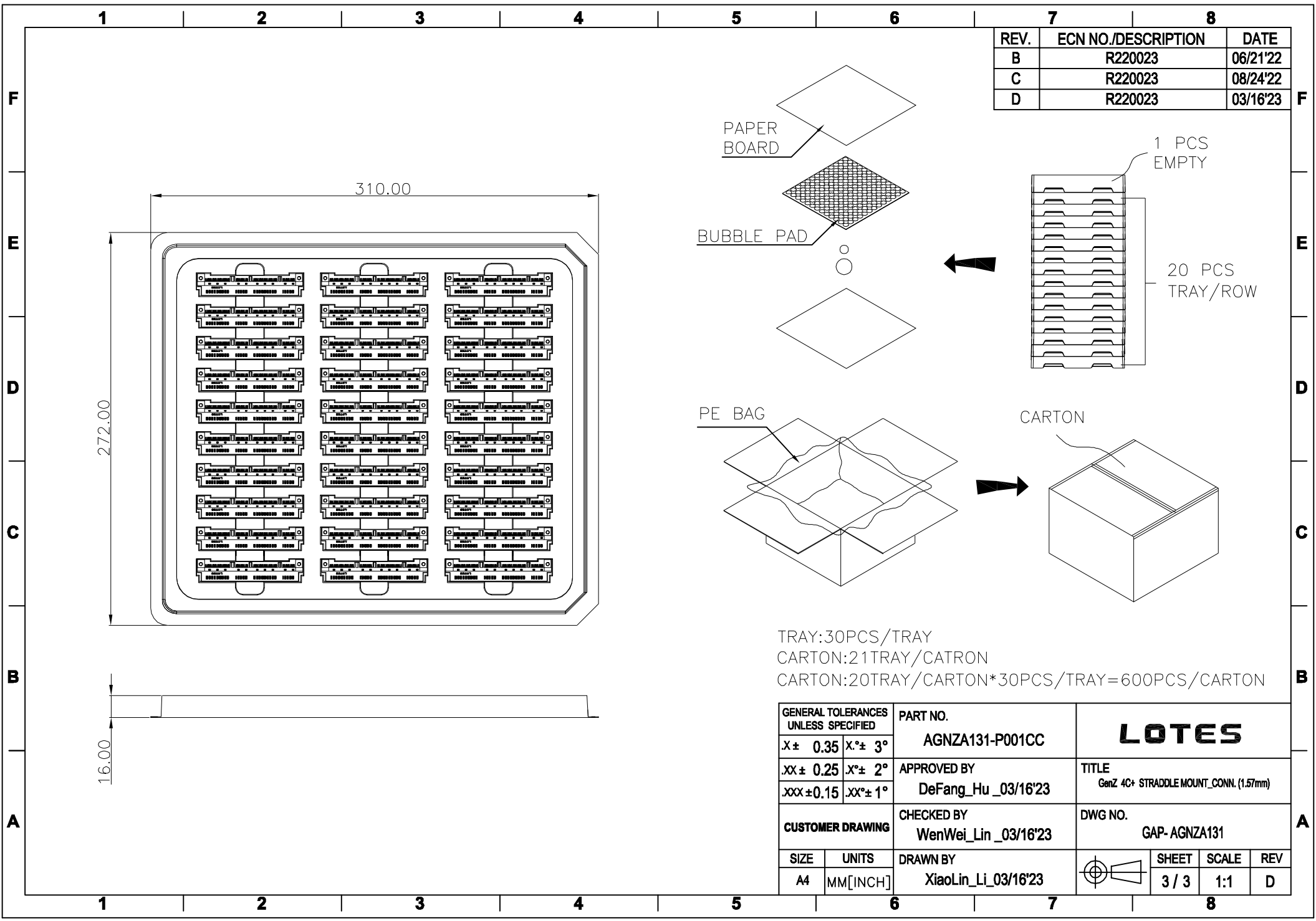


TABLE:	
PART No.	CONTACT AREA PLATING
AGNZA131-P001CC	30u"

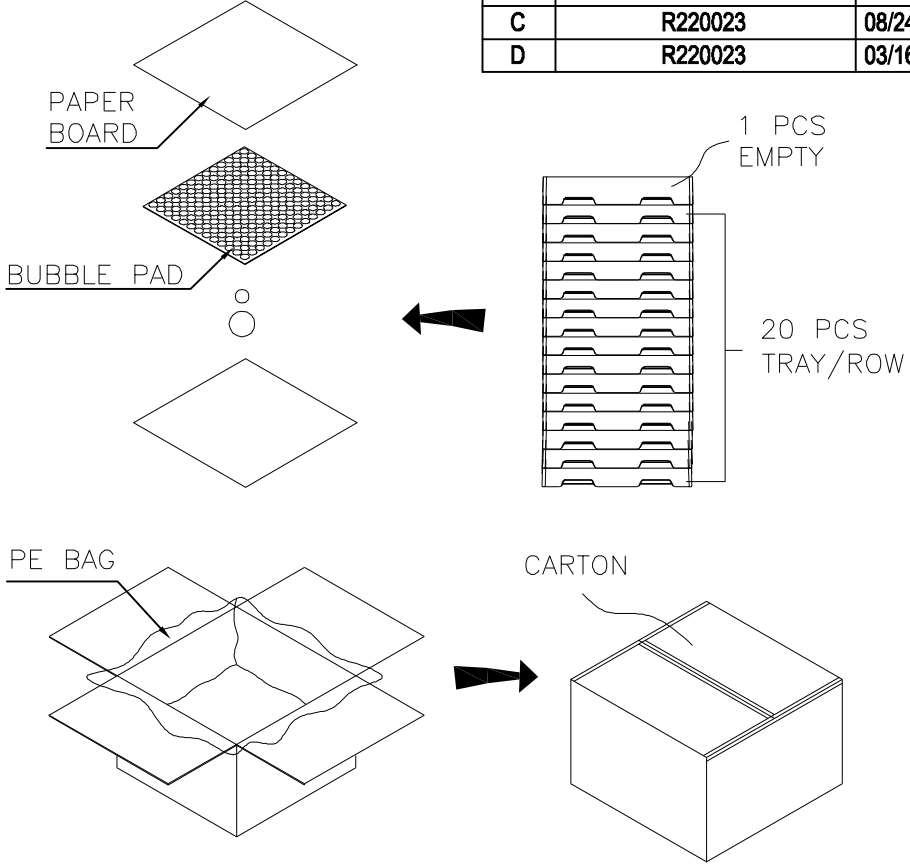
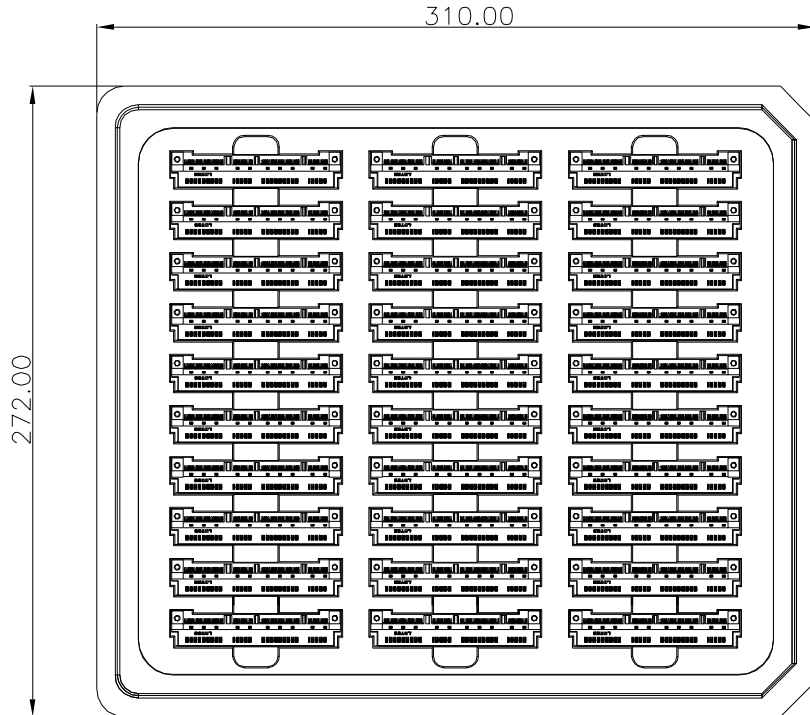
GENERAL TOLERANCES UNLESS SPECIFIED		PART NO.	LOTES
X± 0.35	X°± 3°	AGNZA131-P001CC	
.XX± 0.25	.X°± 2°	APPROVED BY	TITLE
.XXX±0.15	.XX°± 1°	DeFang_Hu_03/16'23	GenZ 4C+ STRADDLE MOUNT_CONN. (1.57mm)
CUSTOMER DRAWING		CHECKED BY	DWG NO.
		WenWei_Lin_03/16'23	GAP-AGNZA131
SIZE	UNITS	DRAWN BY	SHEET
A4	MM[INCH]	XiaoLin_Li_03/16'23	
			REV
			D

GenZ 4C+ CARD

GenZ 4C+STRADDLE MOUNT CONNECTOR FOOTPRINT



REV.	ECN NO./DESCRIPTION	DATE
B	R220023	06/21'22
C	R220023	08/24'22
D	R220023	03/16'23



TRAY:30PCS/TRAY
 CARTON:21TRAY/CATRON
 CARTON:20TRAY/CARTON*30PCS/TRAY=600PCS/CARTON

GENERAL TOLERANCES UNLESS SPECIFIED		PART NO.	LOTES			
X± 0.35	X°± 3°	AGNZA131-P001CC	TITLE GenZ 4C+ STRADDLE MOUNT_CONN. (1.57mm)			
.XX± 0.25	.X°± 2°	APPROVED BY DeFang_Hu_03/16'23				
.XXX±0.15	.XX°± 1°	CHECKED BY WenWei_Lin_03/16'23	DWG NO. GAP-AGNZA131			
CUSTOMER DRAWING		DRAWN BY XiaoLin_Li_03/16'23		SHEET	SCALE	REV
SIZE A4	UNITS MM[INCH]			3 / 3	1:1	D