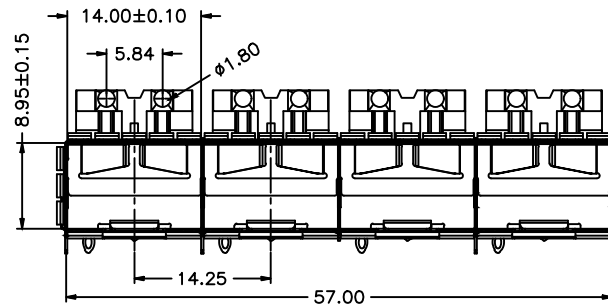
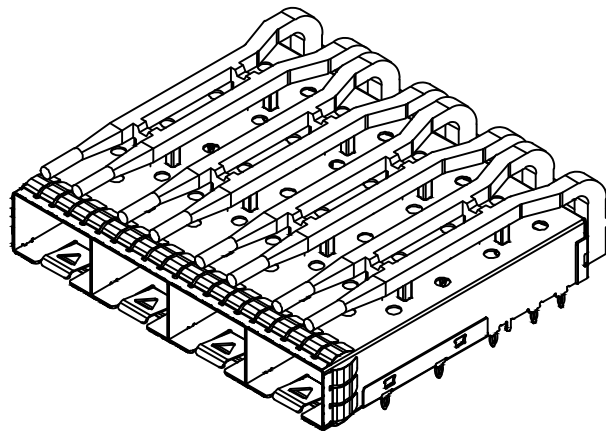
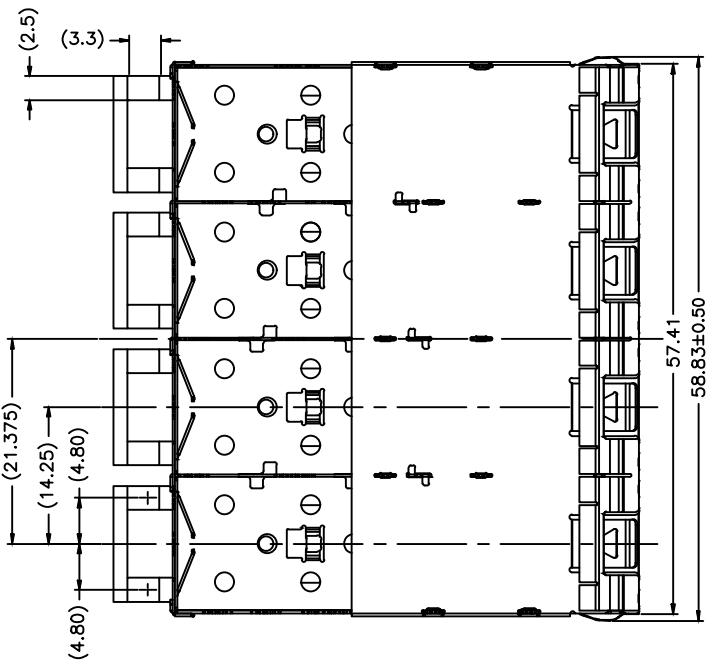
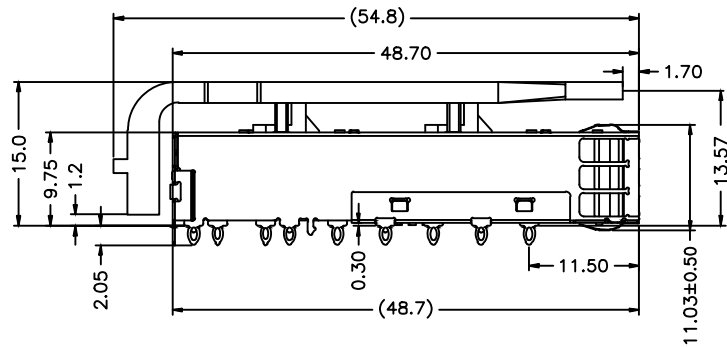


REV	DESCRIPTION OF CHANGE	REVIEWED BY	ISSUE DATE
A	FIRST ISSUE	LEO	2023-03-21

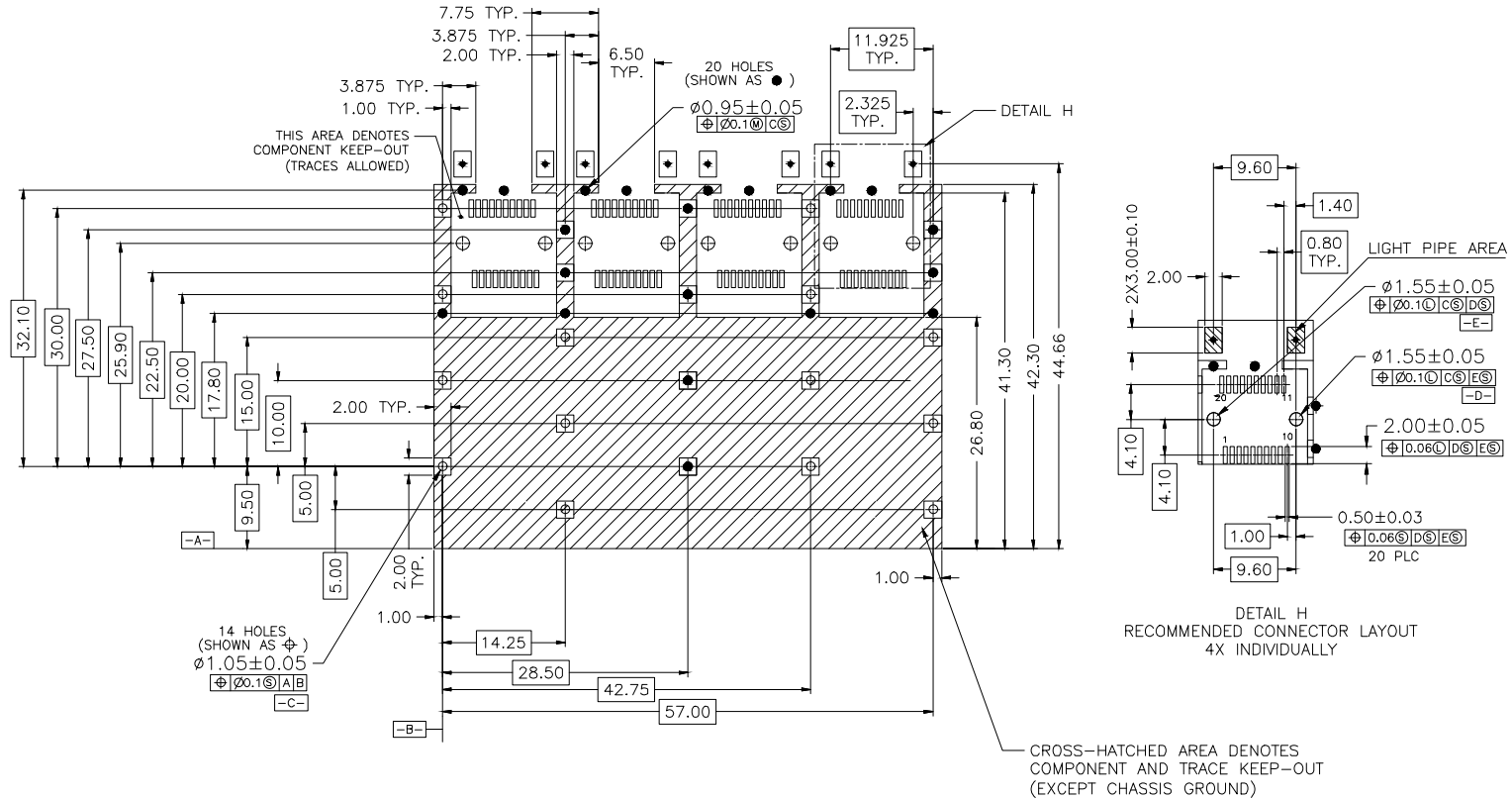


NOTES:
 1.MATERIAL:
 CAGE: COPPER ALLOY,NI PLATING,THICKNESS 0.25mm
 MIDDLE CAGE: STAINLESS STEEL
 LIGHT PIPE: CLEAR POLYCARBONATE
 2.PACKAGING: TRAY PACKAGING
 3.TEMPERATURE RANGE:
 OPERATING : -40°C TO +85°C
 NON OPERATING : -55°C TO +105°C



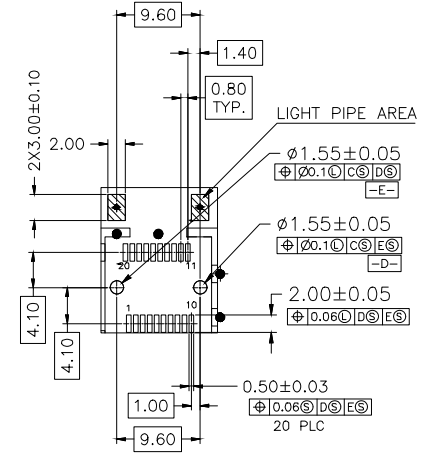
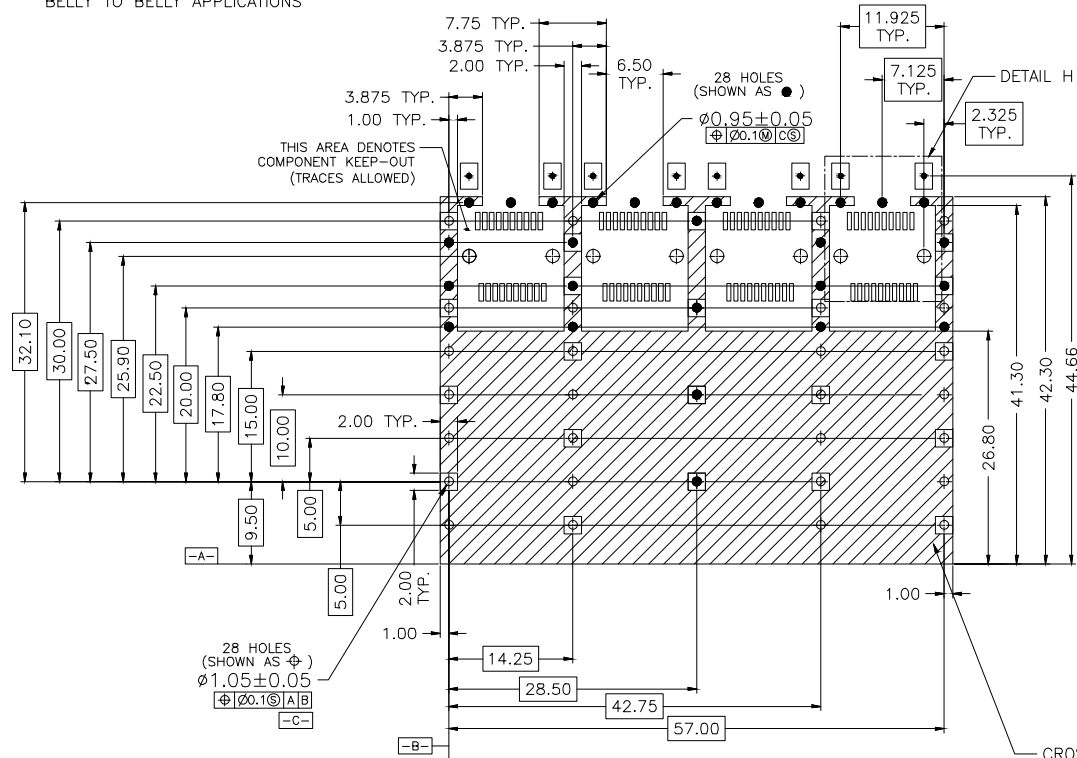
TITLE SFP+ 1X4 CAGE WITH EMI SPRING FINGER LIGHT PIPE			LINK-PP INT'L TECHNOLOGY CO., LIMITED		
PART NO. LP14BC01200S-SCNL			GENNERAL TOLERANCE		UNIT:MM
APPROVE	CHECK	DRAW	. X±0.20	. X±1°	SCALE:1:1
LEO	JAMES	JAMES	. XX±0.15	. XX±5°	SHEET:1/4
			. XXX±0.10		REV:A

RECOMMENDED PCB CONFIGURATION
WITH KEEP-OUT AREAS
SINGLE SIDED APPLICATIONS



TITLE SFP+ 1X4 CAGE WITH EMI SPRING FINGER LIGHT PIPE			LINK-PP INT'L TECHNOLOGY CO., LIMITED		
PART NO. LP14BC01200S-SCNL			GENNERAL TOLERANCE		UNIT:MM SIZE:A4
APPROVE	CHECK	DRAW	. X±0.20	. X±1°	SCALE:1:1 SHEET:2/4 REV:A
LEO	JAMES	JAMES	. XX±0.15	. XX±5°	
			. XXX±0.10		

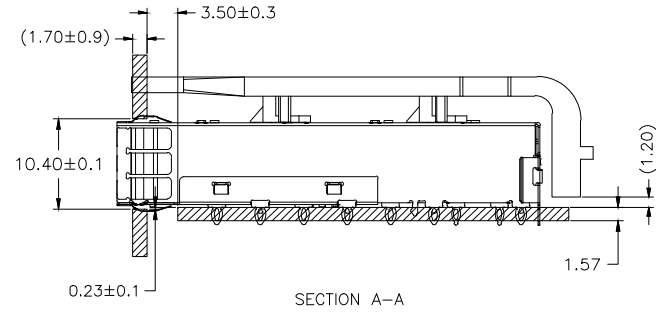
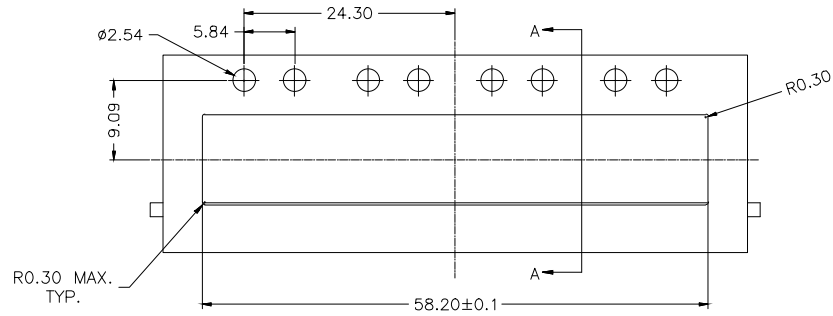
RECOMMENDED PCB CONFIGURATION
WITH KEEP-OUT AREAS
BELLY TO BELLY APPLICATIONS



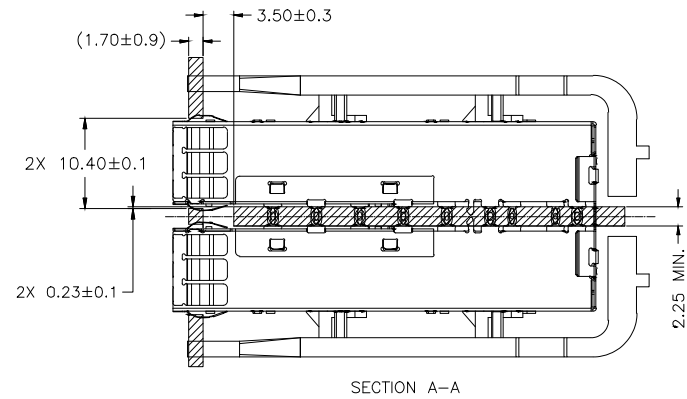
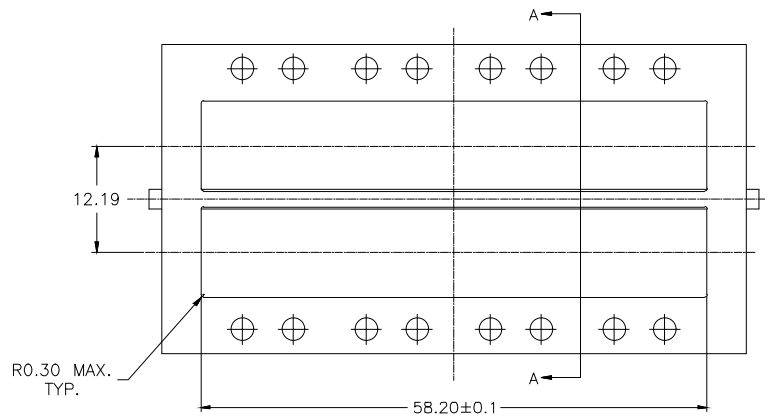
CROSS-HATCHED AREA DENOTES COMPONENT AND TRACE KEEP-OUT (EXCEPT CHASSIS GROUND)



TITLE SFP+ 1X4 CAGE WITH EMI SPRING FINGER LIGHT PIPE			LINK-PP INT'L TECHNOLOGY CO., LIMITED		
PART NO. LP14BC01200S-SCNL			GENNERAL TOLERANCE		UNIT:MM
APPROVE	CHECK	DRAW	. X±0.20	. X±1°	SIZE:A4
LEO	JAMES	JAMES	. XX±0.15	. XX±5°	SHEET:3/4
			. XXX±0.10	SCALE:1:1	REV:A



RECOMMENDED BEZEL DESIGN
SINGLE SIDED APPLICATIONS



RECOMMENDED BEZEL DESIGN
BELLY TO BELLY APPLICATIONS



TITLE SFP+ 1X4 CAGE WITH EMI SPRING FINGER LIGHT PIPE			LINK-PP INT'L TECHNOLOGY CO., LIMITED		
PART NO. LP14BC01200S-SCNL			GENNERAL TOLERANCE		UNIT:MM
APPROVE	CHECK	DRAW	° X±0.20	° X±1°	SIZE:A4
LEO	JAMES	JAMES	° XX±0.15	° XX±5°	SHEET:4/4
			° XXX±0.10	SCALE:1:1	REV:A